



FEDERATION NEWS



February 2021

Dear Parents

We have reached the end of the half term and the end of my first half term as the Executive Head Teacher of Peter Pan and Cherry Trees Nursery Schools.

I would like to thank all the families at Cherry Trees for the warm welcome I have received from you all, and Peter Pan families for your continued support.

I am delighted that Suzie has been appointed as the federation Acting Deputy Head Teacher.

It is our intention to work one week at each school in turn whilst we are still working under the pandemic restrictions. However, if you need to speak to one of us for a particular reason you just need to ask at the office and we will get back to you as quickly as we can.

We welcome two members of staff who are on secondment to us from Dawn til Dusk to support us whilst some of our own staff are shielding. Chloe and Paula are both based at Cherry Trees this term.

Have a lovely half term break and we look forward to seeing those of you who are coming into nursery on Monday 22nd February.

Julie Smith
Executive
Head Teacher



Our learning this term

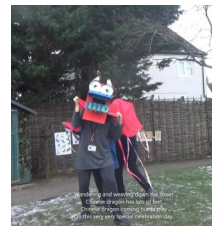
This term we have been learning about identifying and managing our feelings by reading 'The Colour Monster', we used colours to represent our feelings. We made our own colour monsters and put them on display.



We have read the story of the 'Three Little Pigs' and how they built their houses to keep the wolf out! We made finger puppets and houses for them to live in and talked about which was the strongest house for them to live in and we looked at the features of our own houses.

We also took part in the Big Bird Watch, and made bird food to put out in the garden.

We finished the term this week with our Chinese New Year celebrations. We have made dragons to dance with, lanterns and fans and chopsticks to use in the home corner and Chinese restaurants. We have also enjoyed some delicious stir fry to eat!



You can join in with all our learning at home by logging onto one of the websites at:

www.peterpannurseryschool.co.uk

www.cherrytreesnurseryschool.co.uk

And navigate to the home learning page.

Don't forget to download the Parent Hub app for more stories and activities

TERM DATES

HALF TERM HOLIDAY:	15th February to 19th February
Spring Term 2:	22nd February to 26th March 2021
EASTER HOLIDAYS:	29th March to 14th April 2021
Summer Term 1:	15th April to 28th May 2021
HALF TERM HOLIDAY:	31st May to 4th June 2021
Summer Term 2:	7th June to 22nd July 2021

COVID Update

We have been following all the government guidance this term to help to reduce the risks to children and staff at nursery school. We thank you all for your support with the measures we have put in place.

The flowchart below shows you the procedures to follow if you think you or your child may be showing symptoms.

Coronavirus information for Parents/Carers (From Fri 11thth Dec 2020)

For general advice about COVID-19 and the symptoms to look for go to: www.nhs.uk/coronavirus

Child, or someone in your household, develops symptoms of COVID-19: new continuous cough (coughing frequently for more than an hour, or 3 or more coughing episodes in 24 hours) and/or high temperature and/or a loss of, or change in, normal sense of taste or smell (anosmia).

If your child is at home, do not send them to their education setting. Inform the setting through absence reporting.

If your child develops symptoms at their education setting, they will be separated from others and sent home.

If your child, or anyone in your household, has symptoms they must isolate at home for **10 days** (from date of onset of symptoms). The rest of the household should isolate for **10 days**.
If your child does not have symptoms but someone in the household does, your child and all other household members without symptoms must isolate at home for **10 days**.

Book a test as soon as possible for anyone in your household with symptoms. This can be done online at: www.nhs.uk/coronavirus.
Please do not let anyone from your household go into a setting or work until the test result is known.
Alternatively a test can be ordered by phone on NHS 119 for those without the internet.

Your closest test location will be offered when you book, and both drive-in and walk-in tests are available in Bedford. You may need to visit the website regularly for more slots to be released. If you are not able to walk or drive to the test centre, and no-one you live with can take you, you can request a home test kit.
Do not take a taxi or use public transport.

Result of test (you will receive this by email or text message).
It is important you inform the setting of the result as soon as possible.

Negative

Child can return to setting once well. The rest of the household can stop isolating.

Positive

Inform setting of positive test result as soon as possible.

Ensure positive case completes remainder of **10 day** isolation period (from date of onset of symptoms). Household members without symptoms should complete **10 day** isolation – even if they have received a negative test result.

NHS test and trace service will send you a text or email alert or call you with instructions of how to share details of people with whom you have had close, recent contact and places you have visited.

If your child is identified as having been in close contact with a confirmed case, they will be asked to self-isolate for **10 days**. The rest of the household does not need to isolate unless the child/close contact develops symptoms. **ONLY GO FOR A TEST IF SYMPTOMATIC**

For medical advice call NHS 111, or in an emergency call 999

If a child is a confirmed case they can return to school after **10 days**. However if they still have a temperature, diarrhoea or are being sick they should wait a further 48 hours after these symptoms stop. If a household member is a confirmed case, but child does not develop symptoms, they can return to setting only after completing the **10 days** household isolation period.