



# FEDERATION NEWS



MAY 26

Peter Pan & Cherry Trees Nursery Schools

Dear Parents and Carers

We welcomed new families to Cherry Trees and Peter Pan at the start of this half term and we are pleased that they have settled into the Nursery routines happily.

This half term has been filled with many enjoyable learning experiences for the children, including the visit from Ark Farm and the Fire Service. The children loved meeting the animals and we have included some photos in the newsletter so that you can talk to your children about their learning.

We have also started our transition work with the Primary Schools for our older children. Teachers from the Primary Schools will be visiting both Nursery Schools and there are lots of things that you can support with at home too, by engaging with 'Mouse Club'. This provides a link between home, Nursery School and Primary School.....more details to follow after half term. If you have any questions about Starting Reception, please speak a member of staff. I have also included the Starting Reception website which also has lots of helpful tips and information: <https://startingreception.co.uk/>

I hope that you all enjoy the half term break, we have included some local activities which may be of interest to you.

We look forward to hearing about your half-term holiday news when we return to Nursery School on Tuesday 2nd June 2026.



Best wishes

Julie Smith

Executive Head Teacher

*'Celebrating and Strengthening our Communities Together'*

## TERM DATES

Half-term: Monday 25th May - Friday 29th May

Inset Day Nursery closed: Monday 1st June

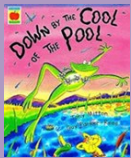
**Nursery reopens: Tuesday 2nd June**

Last day of Summer term: Friday 17th July

(no tea club)

## Our learning this term:

This half term, the children have thoroughly enjoyed exploring the natural world as summer approaches. New indoor and outdoor resources, alongside skillful adult interactions, have added further challenge, curiosity and excitement to their play and learning.

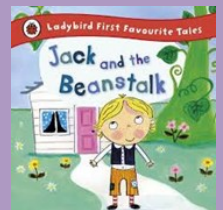


### Life Cycles

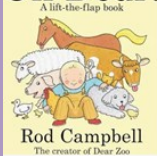
After reading Down in the Cool of the Pool, the children learnt about the life cycle of a frog and enjoyed learning new vocabulary such as froglet. They loved singing and acting out Five Little Speckled Frogs together.

### Planting and Growing

The story Jack and the Beanstalk inspired the children's imaginations and led to lots of discussion about growing plants. The children planted beans in clear bags so they could observe roots and shoots appearing over time. We also enjoyed reading 10 Little Seeds and Errol's Garden, which encouraged the children to design their own imaginary gardens.



### Oh Dear!

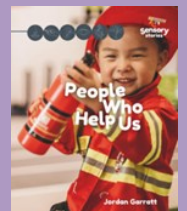


### Farms

The children enjoyed listening to farm stories, singing animal rhymes and engaging in imaginative small world play. A highlight of the half term was the farm visit, where the children met animals including a donkey, goats, lambs and a pig. Some children were initially unsure around the animals, but with gentle support from adults they grew in confidence and enjoyed this memorable experience.

### Jobs in Our Community

The children learnt about different jobs within the community and were excited to meet a real firefighter. This inspired lots of role play as the children dressed up and pretended to put out fires. We are also enjoying the story Clothesline Clues to help children think about different community roles.



### Forest School

At Peter Pan, the children's Forest School learning ended with the exciting experience of watching bread being cooked on a real fire before tasting it together. It has been wonderful to see the children's confidence and independence grow through these experiences. The children at Cherry Trees will enjoy this next term.



## WARM WEATHER

With the weather finally turning warmer, please ensure that you send a named hat to school with your child.



Please also ensure that they have suncream applied before they come to school and if they stay all day, that they bring a named bottle of suncream into school.

It is advisable that they wear something light that covers their shoulders.

Please ensure they wear sensible closed toe shoes (no crocs).



Please do NOT send drinks in, we have water available at all times.

### SNACK

Please remember to donate your £1 school fund to the school office. This contribution goes towards providing healthy snack for the children throughout the day.

If each family donated just £1 per week we would have over £100 per week to spend on the children. Thank you.

### Parent Hub



Please sign up to our Parent Hub app. This is the way we will be sending newsletters and other information home to you.

You can download the app from the Google store or Apple store.

Create an account and search for @PeterPan for Peter Pan or @CherryTrees for Cherry Trees.

Please remember to verify your account.

## UPCOMING DATES FOR YOUR DIARY

**Wed 24th June**

Toilet Training Workshop at Cherry Trees

**Friday 3rd July**

Stay and Play / Picnic

**Friday 10th July**

Carnival Day

**Wednesday 15th July**

Leavers Concert

## USEFUL LINKS



### The Children's Toothbrushing Guide

Healthy smiles start at home: a guide to brushing your child's teeth

[The Children's Toothbrushing Guide](#)



### The Potty Training Guide

[The Potty Training Guide](#)

## Useful Information:

**Office Emails** will be checked every few days over the holiday:

- [cherrytrees@bedfordnurseryschools.com](mailto:cherrytrees@bedfordnurseryschools.com)
- [peterpan@bedfordnurseryschools.com](mailto:peterpan@bedfordnurseryschools.com)

**If you have a concern about a child** but not in immediate danger contact the [Integrated Front Door](#)

Or call: 01234 718700 during office hours 0300 300 8123 out of hours

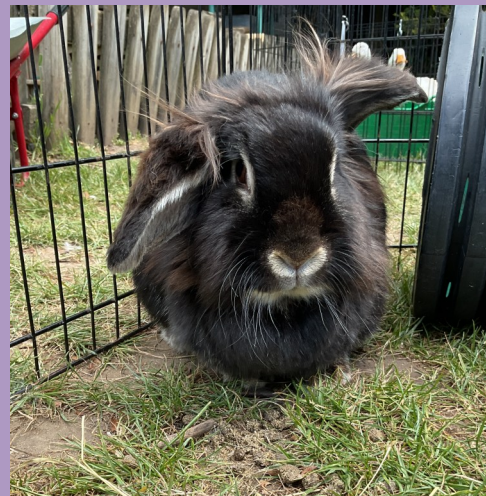
Children's Community [Health Hub](#): 0300 555 0606

[Family Hubs](#): 0300 323 0245 or email: [familyhubs@bedford.gov.uk](mailto:familyhubs@bedford.gov.uk)

# ARK FARM VISIT MAY 2026



Learning was brought to life through the real experience of meeting farm animals.





Bedford Borough  
Libraries

## ACTIVITES OVER THE HOLIDAYS AT BEDFORD LIBRARY

### ELMER SATURDAY STORY

Saturday 23rd May at 3.15pm

### LEGO CLUB

Every Saturday 11am-3pm

### SUNDAY FUNDAY

Every Sunday 11.30am-1.30pm

Lots of fun with Giant Lego,  
board games and puzzles



There are lots of activities for children at The Higgins museum over the holidays.

For more details:

[https://www.thehigginsbedford.org.uk/whats\\_on/family\\_events.aspx](https://www.thehigginsbedford.org.uk/whats_on/family_events.aspx)



The Family Hubs and Children's Centre session timetable for Summer 2026 is available:

<https://familyhubs.bedford.gov.uk/family-hubs-timetables>



## Free Parent Information Sessions/Workshops

- ✓ Managing stress & overwhelm
- ✓ Understanding children's behaviour
- ✓ Building calmer family routines
- ✓ Support from experienced facilitators



SCAN TO REGISTER  
IN 30 SECONDS



Early Help workshops are FREE (fees may apply to others)  
Online / Local sessions available

"Right support Right action Right time"



## Ben and Bella Trails

A magical outdoor reading adventure for children aged 3-7.



For more information click here  
[Ben and Bella trail](#)

The Spotters Guides are available through the Kiosks or cafes in all 3 parks:  
Bedford Park, Russel Park and Mowsbury Park

